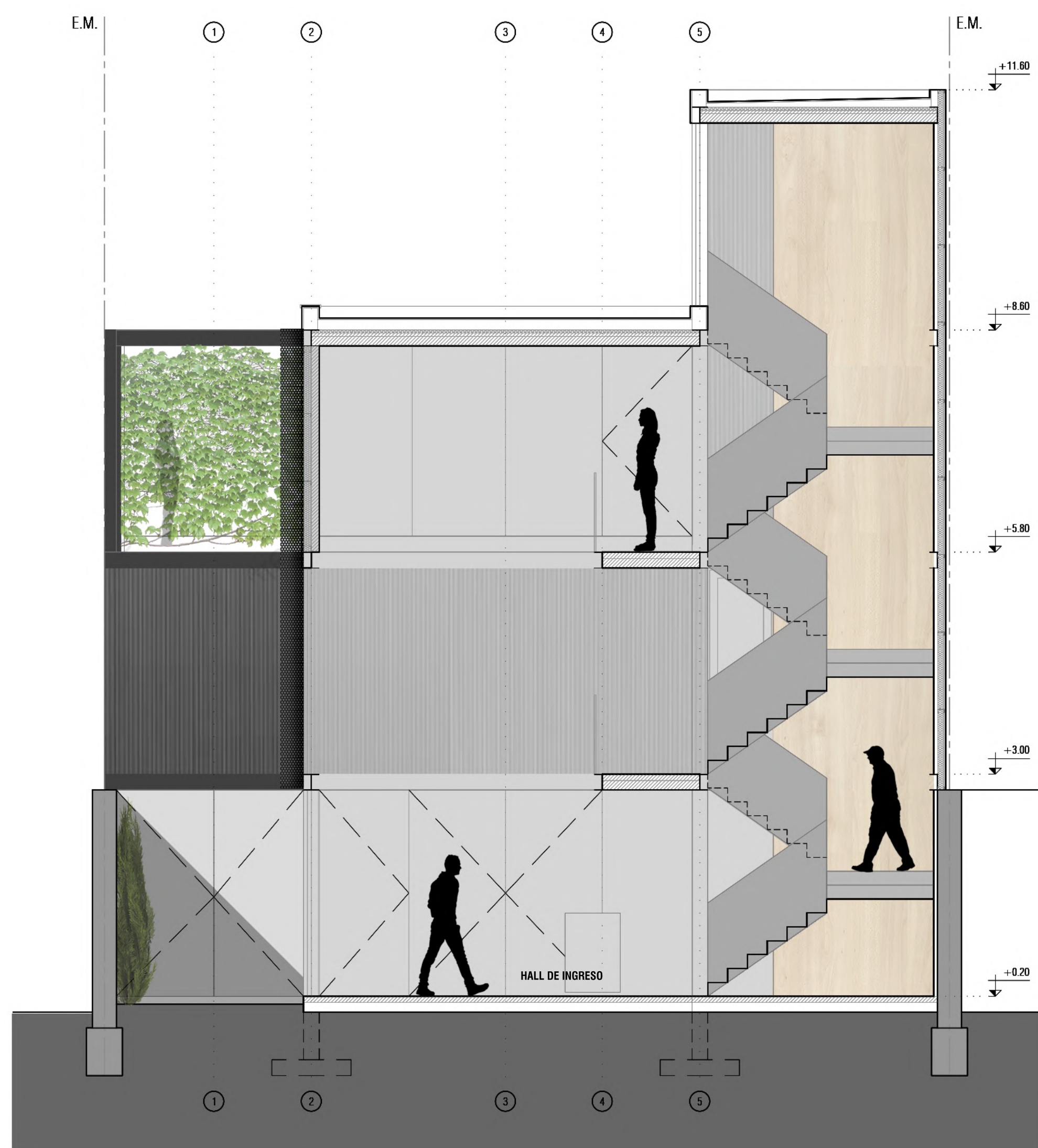


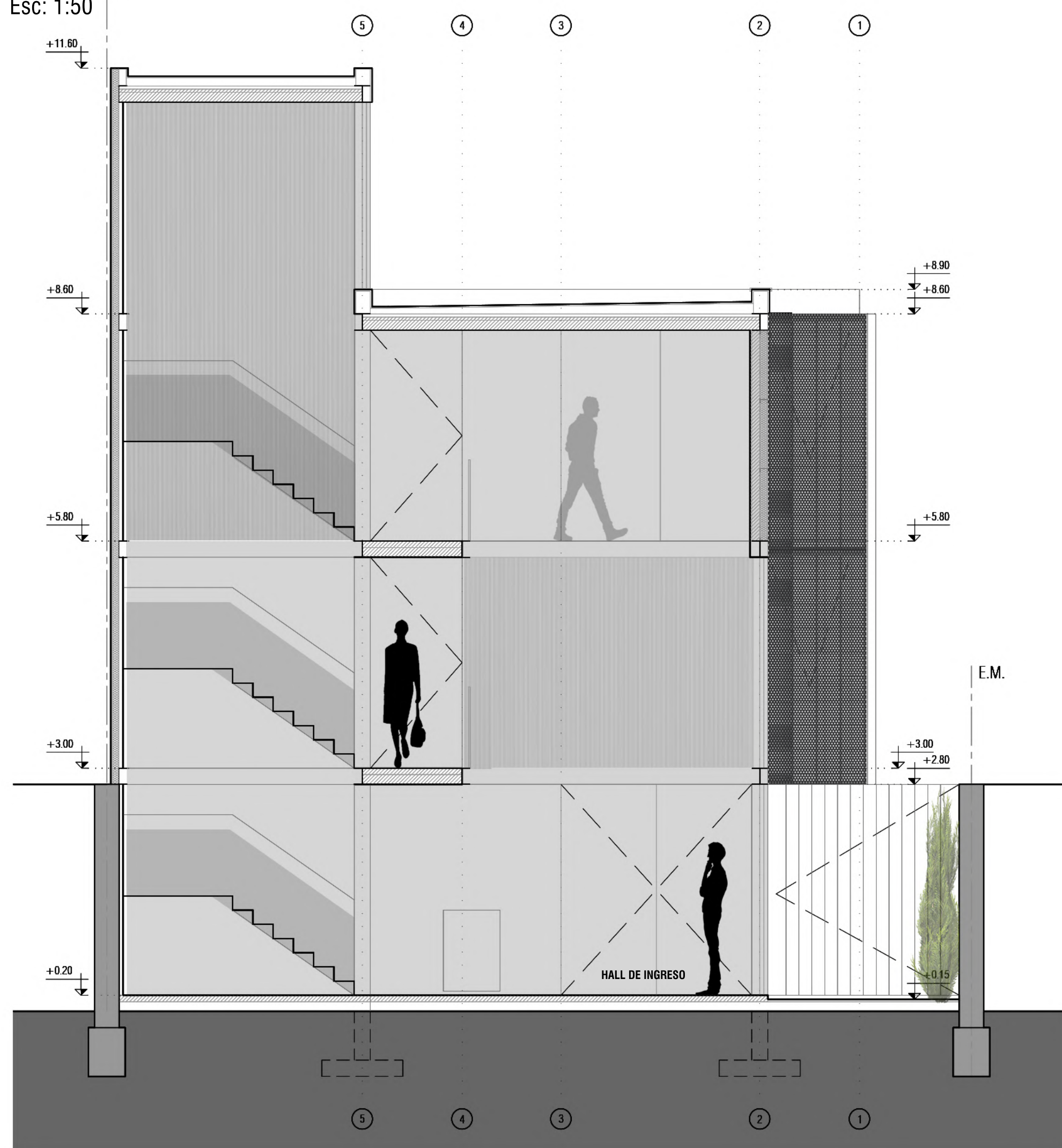
FACHADA
Esc: 1:50



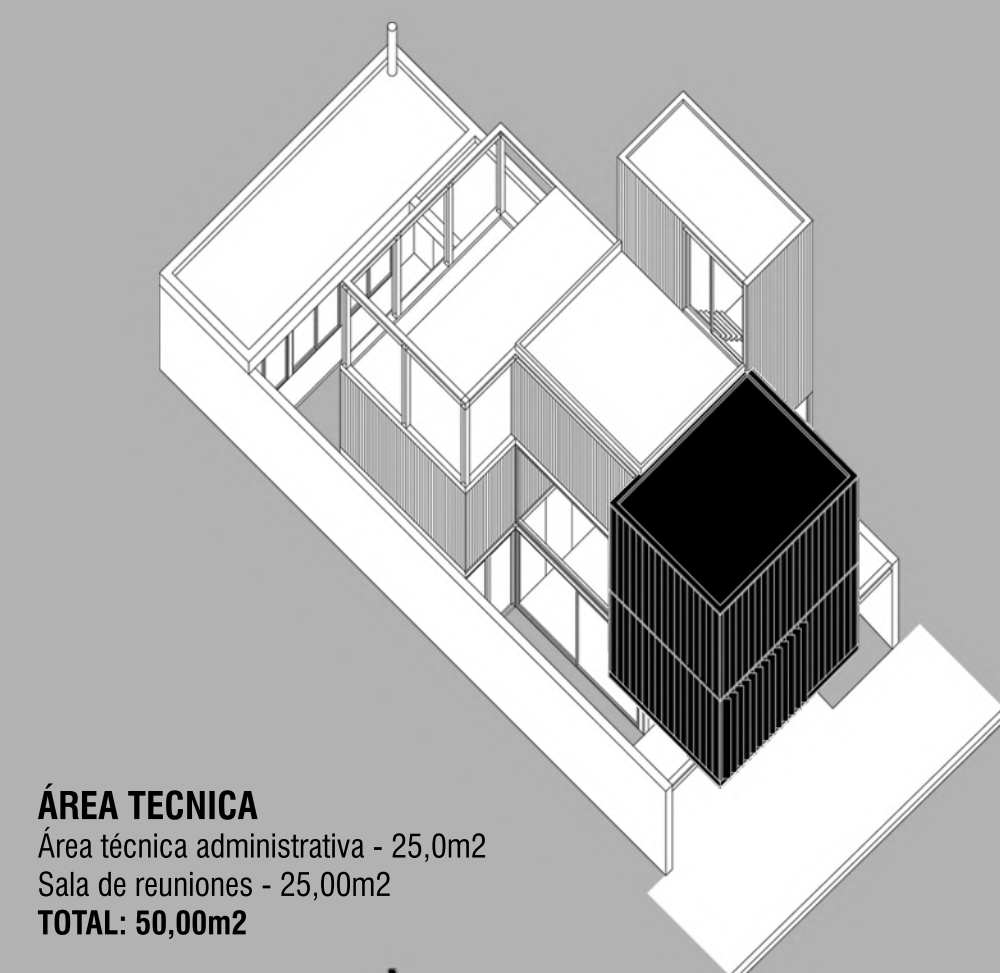
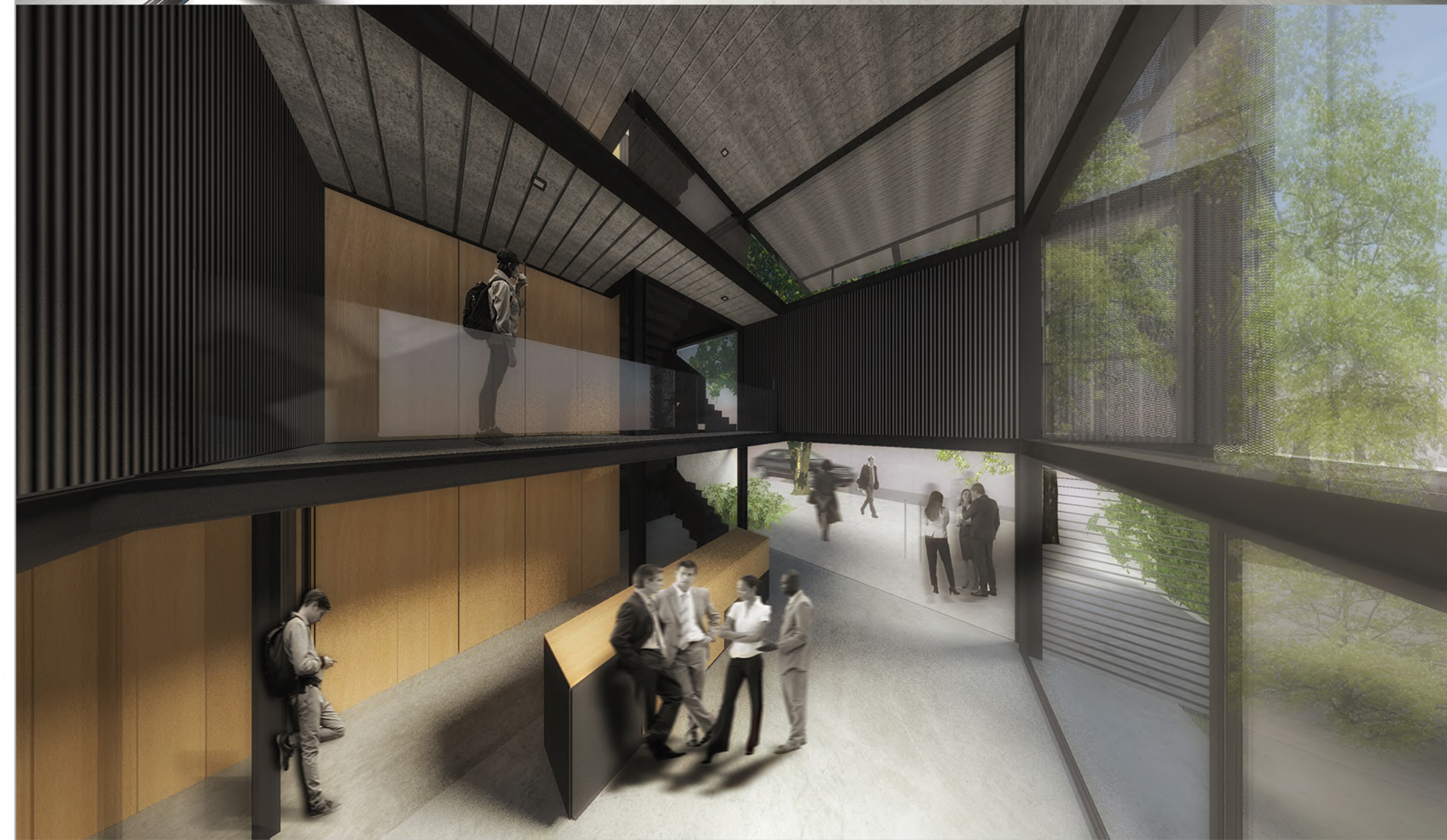
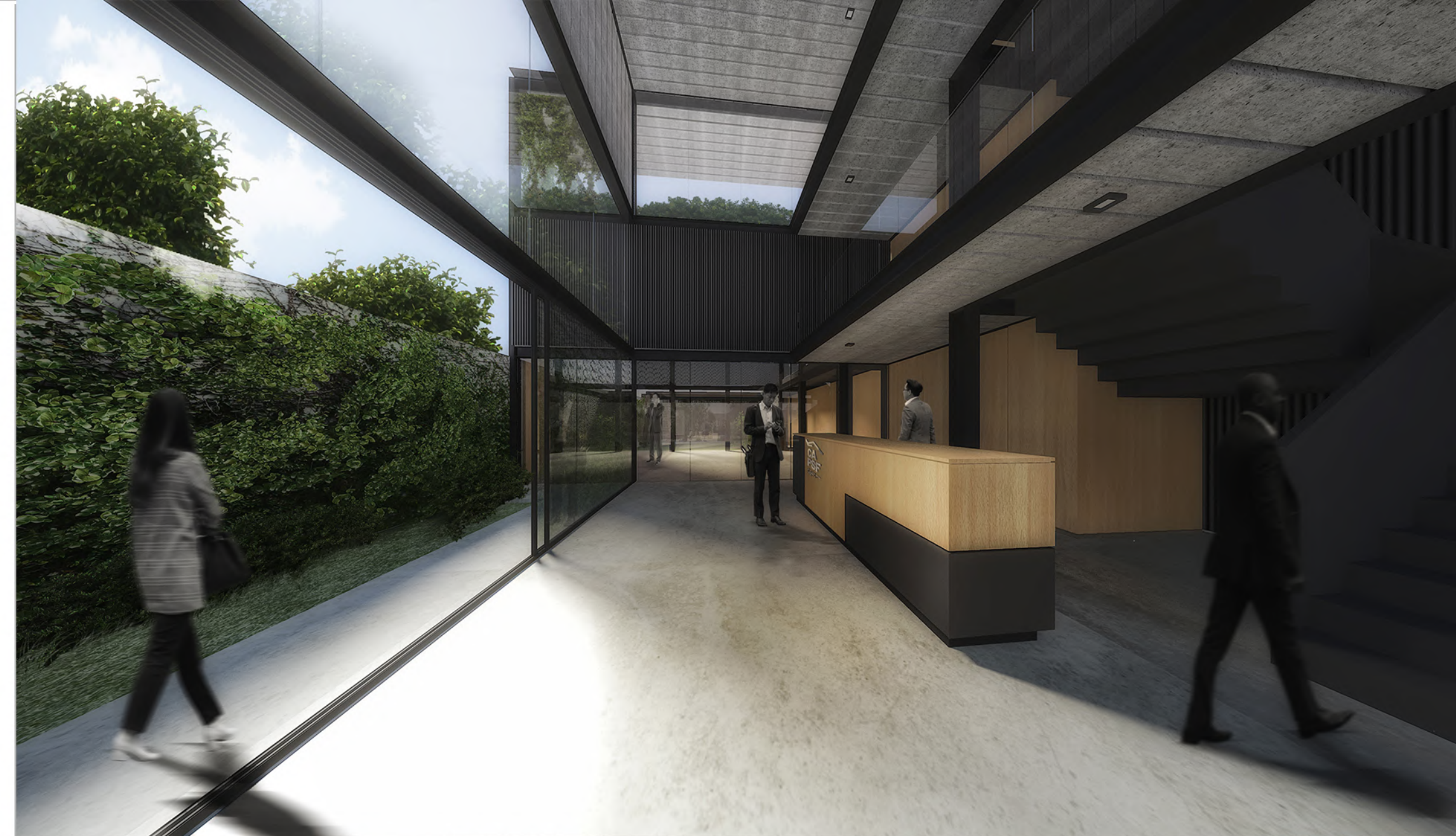
CORTE 3-3
Esc: 1:50



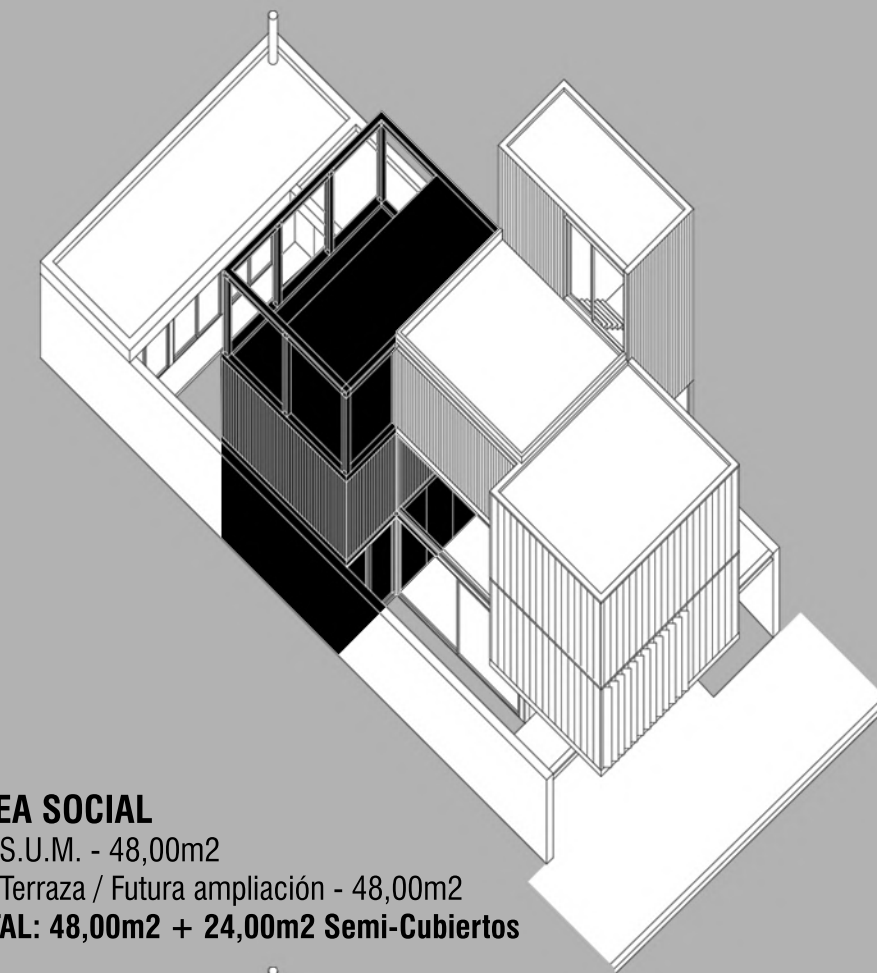
CORTE 5-5
Esc: 1:50



CORTE 6-6
Esc: 1:50



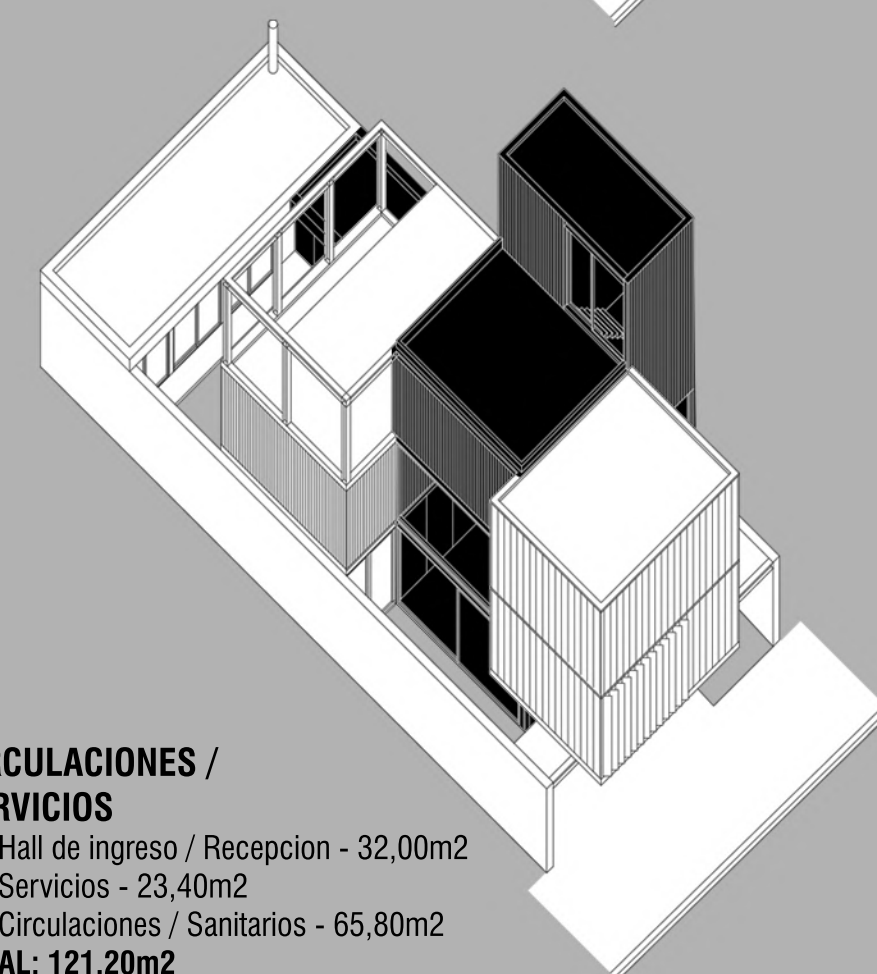
ÁREA TÉCNICA
Área técnica administrativa - 25,0m²
Sala de reuniones - 25,00m²
TOTAL: 50,00m²



ÁREA SOCIAL
01. S.U.M. - 48,00m²
03. Terraza / Futura ampliación - 48,00m²
TOTAL: 48,00m² + 24,00m² Semi-Cubiertos



ÁREA RECREATIVA
01. Espacio social recreativo - 33,50m²
02. Patio - 40m²
TOTAL: 33,50m² + 10,80m² Semi-Cubiertos



CIRCULACIONES / SERVICIOS
01. Hall de ingreso / Recepcion - 32,00m²
02. Servicios - 23,40m²
03. Circulaciones / Sanitarios - 65,80m²
TOTAL: 121,20m²